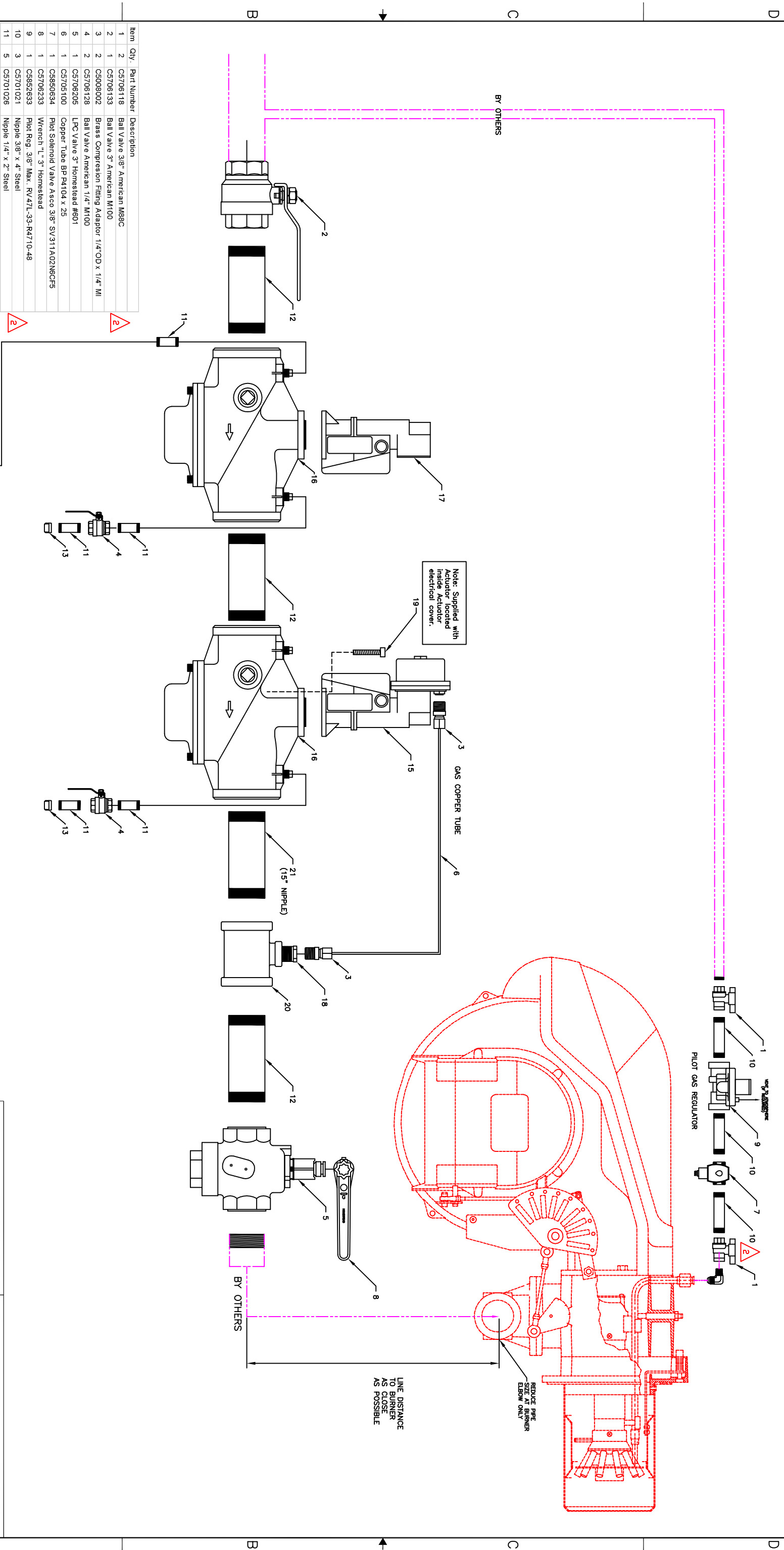


REVISIONS		
REV	DESCRIPTION	DATE
1	INITIAL RELEASE	Sept. 3 2003
2	UPDATE BOM & DRAWING	MARCH 8, 2010



Item	Qty.	Part Number	Description
1	2	CS706118	Ball Valve 3/8" American M88C
2	1	CS706133	Ball Valve 3" American M100
3	2	CS008002	Brass Compression Fitting Adaptor 1/4" OD x 1/4" MI
4	2	CS706128	Ball Valve American 1/4" M100
5	1	CS706205	LPC Valve 3" Homestead #801
6	1	CS705100	Copper Tube BP P4104 x 25
7	1	CS850634	Pilot Solenoid Valveasco 3/8" SV311A02NCF5
8	1	CS706233	Wrench "L" 3" Homestead
9	1	CS852633	Pilot Reg. 3/8" Max. RV47L-35-R4710-48
10	3	CS701021	Nipple 3/8" x 4" Steel
11	5	CS701026	Nipple 1/4" x 2" Steel
12	3	CS701401	Nipple 3" x 6" Steel
13	2	CS704500	BMI CAP 1/4"
14	1	CS332010	LGP SWITCH HW CS09Z1A1012
15	1	CS851021	REG/ACTUATOR SIEMENS SKP25.011U1
16	2	CS850423	Gas Valve 3" Siemens VGG10.804U
17	1	CS851015	ON/OFF ACTUATOR SIEMENS SKP15.013U1
18	1	CS700203	Reducing Bushing 1-1/4" x 1/4" Std. Black
19	4	CS705017	Actuator Fastening Screw
20	1	CS705017	BMI TEE Fitting 3" x 3" x 1-1/4"
21	1	CS701403	Nipple 3" x 15" Steel

THIRD ANGLE PROJECTION		APPROVED		DATE	
DRAWN: Jeff Kojmer		DATE: Sept. 3 2003		TITLE	
CHECKED:		MECH:		SIZE DWG. NO. C8316621	
ELECT.:		SCALE: 1:1		SHEET 1 OF 1	
Q.A.:		REVISIONS		RELLO RELLO BURNERS - NORTH AMERICA MISSISSAUGA, Ontario, CANADA, L4W 4H6 Tel: 1-800-4-RELLO Fax: 1-905-2-RELLO	