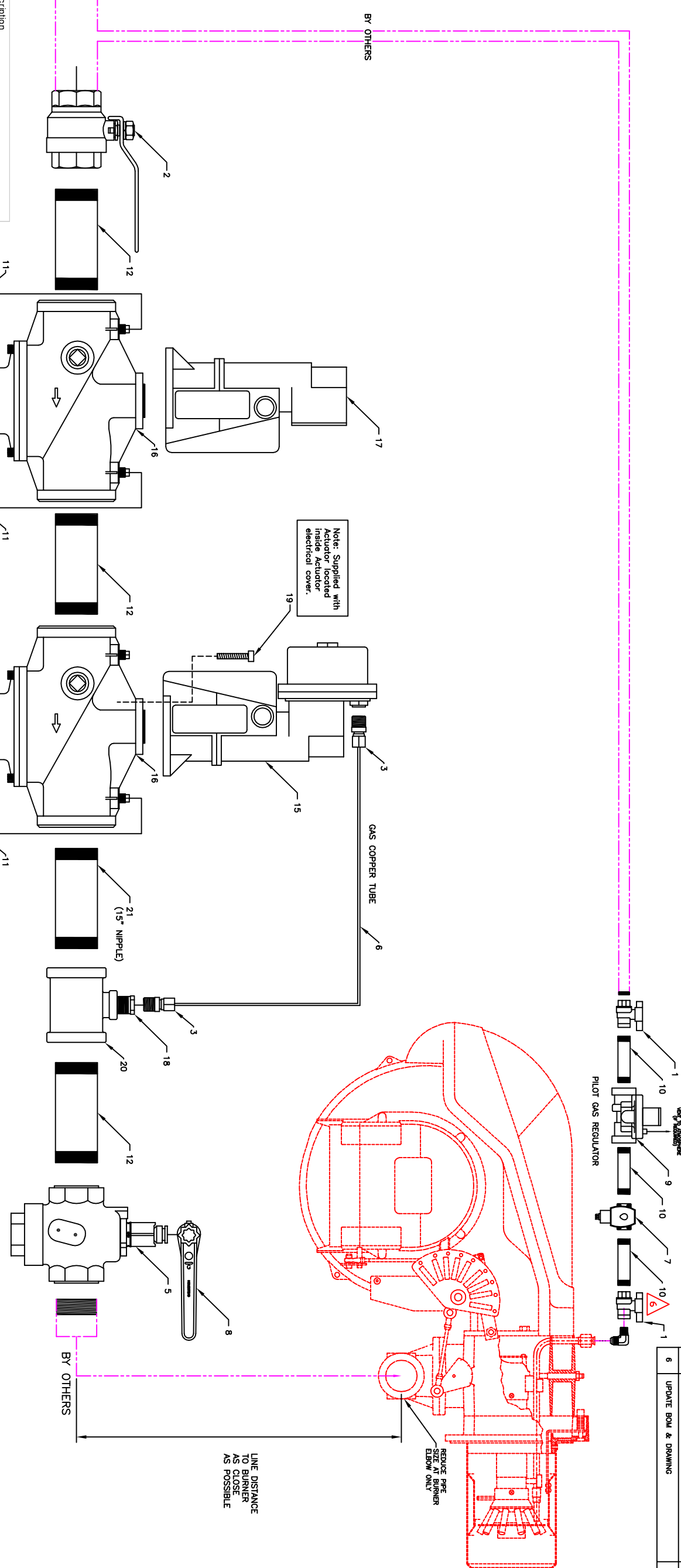


THIS DRAWING CONTAINS PROPRIETARY INFORMATION DISCLOSED BY RIELLO IN CONFERENCE AND EXCEPT AS MAY OTHERWISE PERMIT IN WRITING, TO BE USED SOLELY FOR THE PURPOSE FOR WHICH IT HAS BEEN PROVIDED BY RIELLO

DO NOT SCALE THIS DRAWING

REV	DESCRIPTION	DATE
1	INITIAL RELEASE	Mar 10 2003
2	15" nipple added in place of 6" nipple.	May 3 2004
3	M101 Ball Valves changed to M100 Ball Valves, SKP20.110U17 changed to SKP20.191U17	July 28 2004
4	HW/Antunes LGP switch option added. Fixed valve. Siemens option added.	June 1 2006
5	Siemens option added.	Jan. 10 2007
6	UPDATE BOM & DRAWING	MARCH 8, 2010



Item	Qty.	Part Number	Description
1	2	C5706118	Ball Valve 3/8" American M89C
2	1	C5706133	Ball Valve 3" American M100
3	2	C5008002	Brass Compression Fitting Adaptor 1/4"OD x 1/4" MI
4	2	C5706128	Ball Valve American 1/4" M100
5	1	C5706205	LPC Valve 3" Homestead #601
6	1	C5705100	Copper Tube BP P4104 x 25
7	1	C5850634	Pilot Solenoid Valveasco 3/8" SV311A02N6CF5
8	1	C5706233	Wrench "L" 3" Homestead
9	1	C5852633	Pilot Reg. 3/8" Max. RV47L-33-R4710-48
10	3	C5701021	Nipple 3/8" x 4" Steel
11	5	C5701026	Nipple 1/4" x 2" Steel
12	3	C5701401	Nipple 3" x 6" Steel
13	2	C5704500	BMI CAP 1/4"
14	1	C5332010	LGP SWITCH HW C6097A1012
15	1	C5332031	LGP Switch Antunes 8103116202
16	1	C5851021	REG/ACTUATOR SIEMENS SKP25.011U1
17	1	C5850423	Gas Valve 3" Siemens VGG10 804U
18	1	C5851015	ON/OFF ACTUATOR SIEMENS SKP15.013U1
19	1	C5700203	ON/OFF Actuator Siemens SKP10.110U17
20	1	C5700203	Reducing Bushing 1-1/4" x 1/4" Std. Black
21	1	C5705017	Actuator Fastening Screw
21	1	C5701403	BMI TEE Fitting 3" x 3" x 1-1/4"

THIRD ANGLE PROJECTION		APPROVED		DATE	
DRAWN: Jeff Kolmer		APPROVED: [Signature]		March 10 2004	
CHECKED		MCH		SIZE: DWG. NO. C8316622	
ELECT.		TAB 001		SCALE: 1:1	
Q.A.		SHEET 1 OF 1		RIELLO BURNERS - NORTH AMERICA RIELLO BURNERS INC. MISSISSAUGA, Ontario, Canada, L4N 6H6 Tel: 1-800-4-RIELLO Fax: 1-888-2-RIELLO	

RIELLO-BURNER 8 7 6 5 4 3 2 1