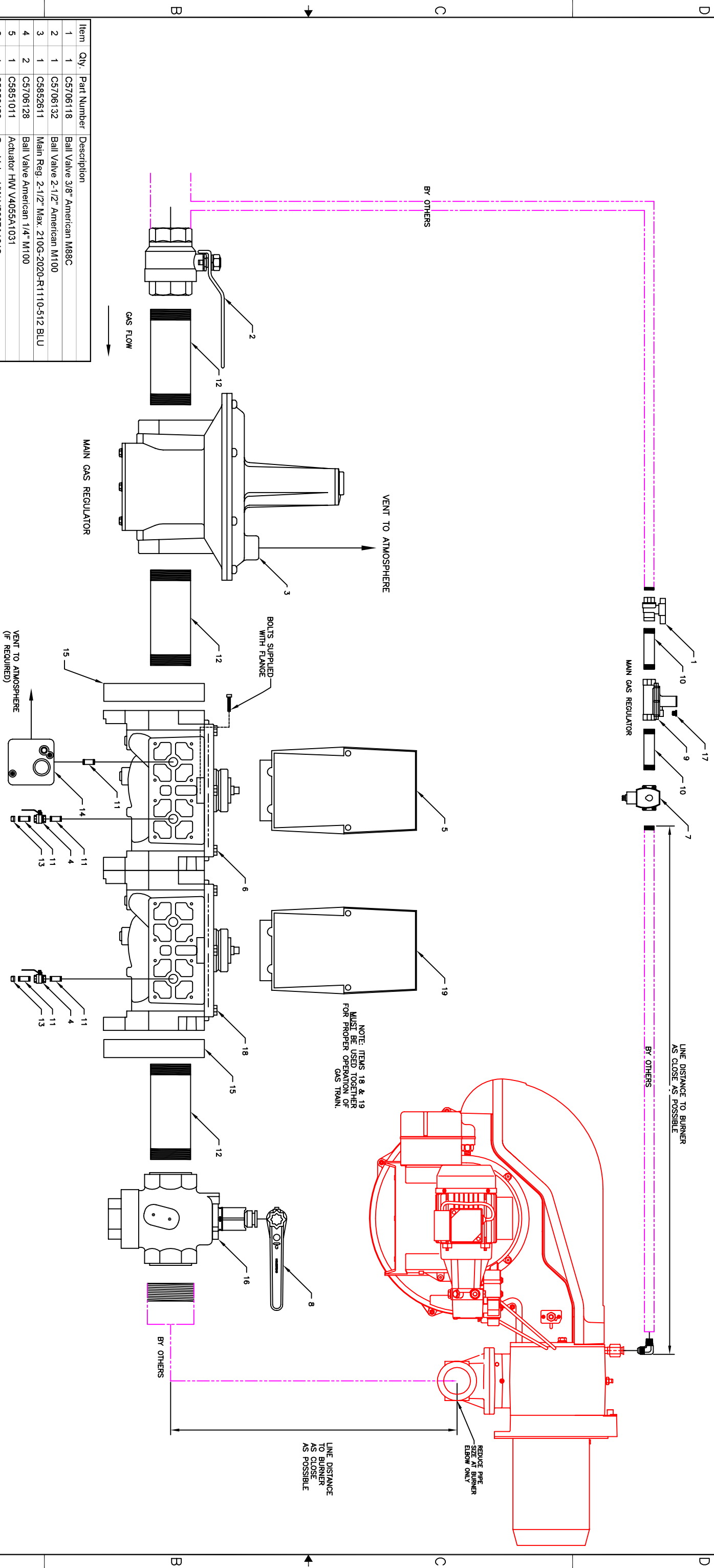


THIS DRAWING CONTAINS PROPRIETARY INFORMATION DISCLOSED BY RELLO IN CONFIDENCE AND EXCEPT AS MAY OTHERWISE PERMIT IN WRITING, TO BE USED SOLELY FOR THE PURPOSE FOR WHICH IT HAS BEEN PROVIDED BY RELLO

DO NOT SCALE THIS DRAWING

REV	DESCRIPTION	DATE
0	INITIAL RELEASE	June 8 2004
1	C5852623 TO C5852618 & C5851013 TO C5851014	Aug. 20 2004
2	C5852625 to C5852611, note added.	Oct. 8 2004



Item	Qty.	Part Number	Description
1	1	C5706118	Ball Valve 3/8" American M88C
2	1	C5706132	Ball Valve 2-1/2" American M100
3	1	C5852611	Main Reg. 2-1/2" Max. 210G-2020-R11110-512 BLU
4	2	C5706128	Ball Valve American 1/4" M100
5	1	C5851011	Actuator HW V4055A1031
6	1	C5850429	Gas Valve HW V5097A1012
7	1	C5850634	Solenoid Gas Valve ASCO 3/8" SV3111A2N6GF5
8	1	C5706232	Wrench "E" 2" OR 2-1/2" Homestead
9	1	C5852618	Pilot Reg. 3/8" MAX 325-3L C10-59
10	2	C5701021	Nipple 3/8" x 4" Steel
11	5	C5701026	Nipple 1/4" x 2" Steel
12	3	C5701357	Nipple 2-1/2" x 6" Steel
13	2	C5704500	BMI CAP 1/4"
14	1	C5332031	LGP Switch Antunes 8103116202
15	2	C5760406	Valve Flange 2-1/2" HW 32001605-002
16	1	C5706204	LPC Valve 2-1/2" Homestead #601
17	1	C5852951	Vent Limiter Max-12A09
18	1	C5850431	Gas Valve HW V5097C1018
19	1	C5851014	Actuator HW V4055D1019 13 SEC

ALL COMPONENTS SHIPPED LOOSE FOR ASSEMBLY BY OTHERS.

THIRD ANGLE PROJECTION	APPROVED	DATE	TITLE
	Jeff Kohner	June 8 2004	2-1/2" GAS VALVE TRAIN DRAWING
RELO BURNERS - NORTH AMERICA 2165 Meadowpine Blvd. MISSISSAUGA, Ontario, Canada L4N 6R6 Tel: 905-882-4444 - RELO Fax: 905-882-4444			
CHECKED	MECH.	SIZE	DATE
		DWG. NO.	001
		SCALE	1:1
		SHEET	1 OF 1