

# GMI-4M Boiler

2007 ASME BOILER & PRESSURE VESSEL CODE  
SECTION IV.

HTP	MAWP	TEMP
240 PSI	160 PSI	210° F

Name	Connection	Size	Type	Qty.
A	Water Inlet , S.S	4"	FLG.	1
B	Water Outlet , S.S	4"	FLG.	1
C	Gas Inlet (8-14"wc)	3"	NPTF	1
D	Exhaust Connection, S.S.	ø14" OD		1
E				
F	Air Connection Valve, Brass	3/8"	NPTF	1
G	Pressure Relief Valve, Brass	1-1/4"	NPTF	1
H	Condensate connection	3/4"	NPT	1
I	Heater Coils Drain Valve	3/4"	NPT	1

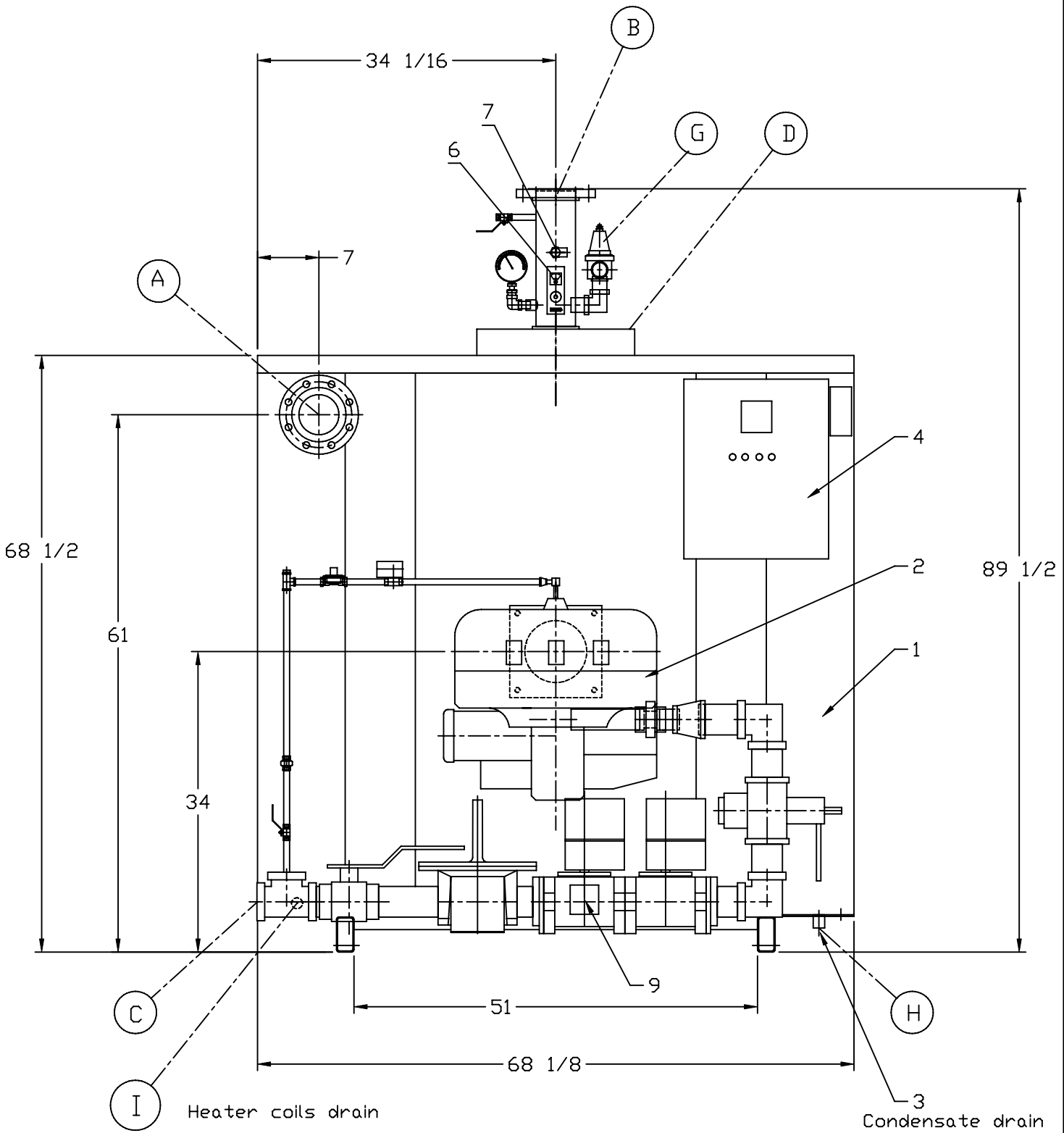
150 PSI

Item	Qty.	Description	Initial
1	1	Boiler Housing Assembly	_____
2	1	Burner Assembly	_____
3	1	Condensate Drain	_____
4	1	Control Panel Assembly	_____
5	1	Low Water Cut off	_____
6	1	Temperature High Limit	_____
7	1	Temperature Sensor	_____
8	1	Flow Switch (installed by other)	_____
9	1	Pressure Switch	_____

Approximate Weight	3450 LB
(Empty)	
Water Capacity	83 US GAL

SCALE: NTS	Gasmaster Industries Ltd. 7480 MacDonald Road, Delta, BC, Canada	
DATE: Nov. 18, 2010		
DRAWN: Sharon Tan	Boiler Assembly-Parts list	
CHK: Ramesh		
APPROVED: BS		
	SHEET: 1/4	Dim. : Inch

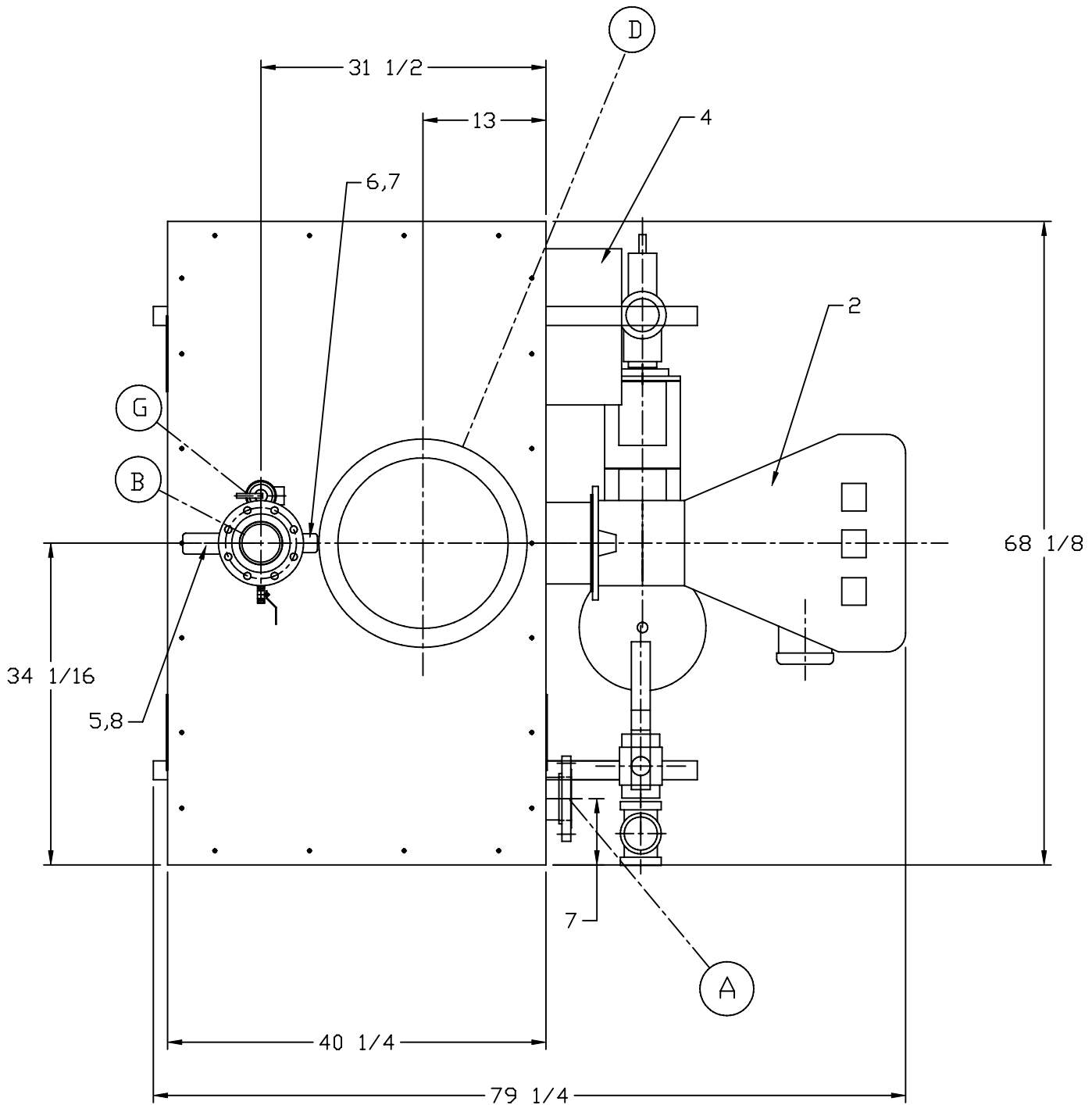
# GMI-4M Boiler



SCALE: NTS  
 DATE: Nov. 18, 2010  
 DRAWN: Sharon Tan  
 CHK: Ramesh  
 APPROVED: BS

Gasmaster Industries Ltd.  
 7480 MacDonald Road, Delta, BC, Canada  
**Boiler Assembly - front view**  
 SHEET: 2/4 Dim. : Inch

# GMI-4M Boiler



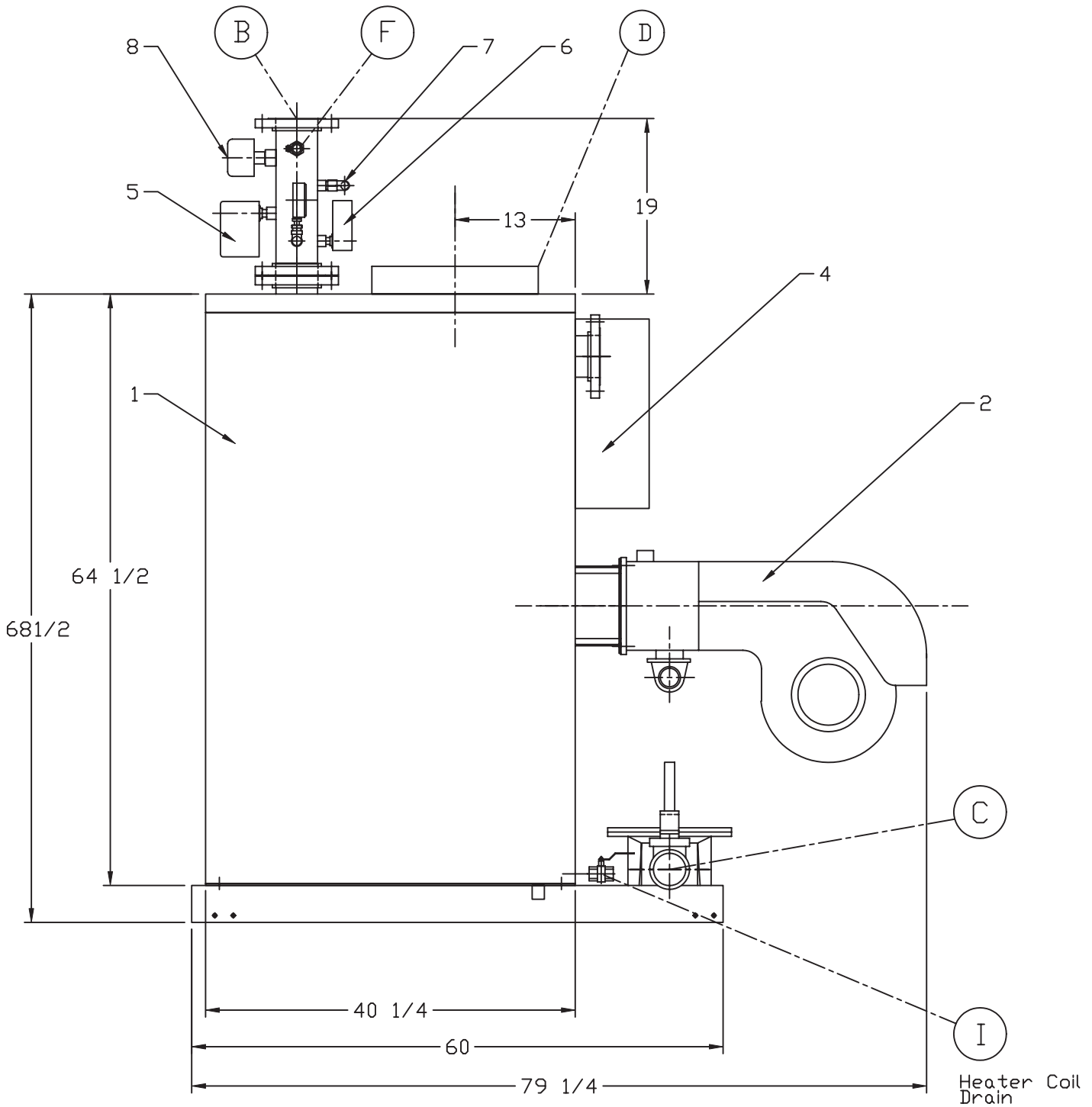
SCALE: NTS  
 DATE: Nov. 18, 2010  
 DRAWN: Sharon Tan  
 CHK: Ramesh  
 APPROVED: BS

Gasmaster Industries Ltd.  
 7480 MacDonald Road, Delta, BC, Canada

**Boiler Assembly - top view**

SHEET: 3/4 | Dim. : Inch

# GMI-4M Boiler



SCALE: NTS	Gasmaster Industries Ltd.	
DATE: Nov. 18, 2010	7480 MacDonald Road, Delta, BC, Canada	
DRAWN: Sharon Tan	Boiler Assembly - side view	
CHK: Ramesh		
APPROVED: BS	SHEET: 4/4	Dim. : Inch